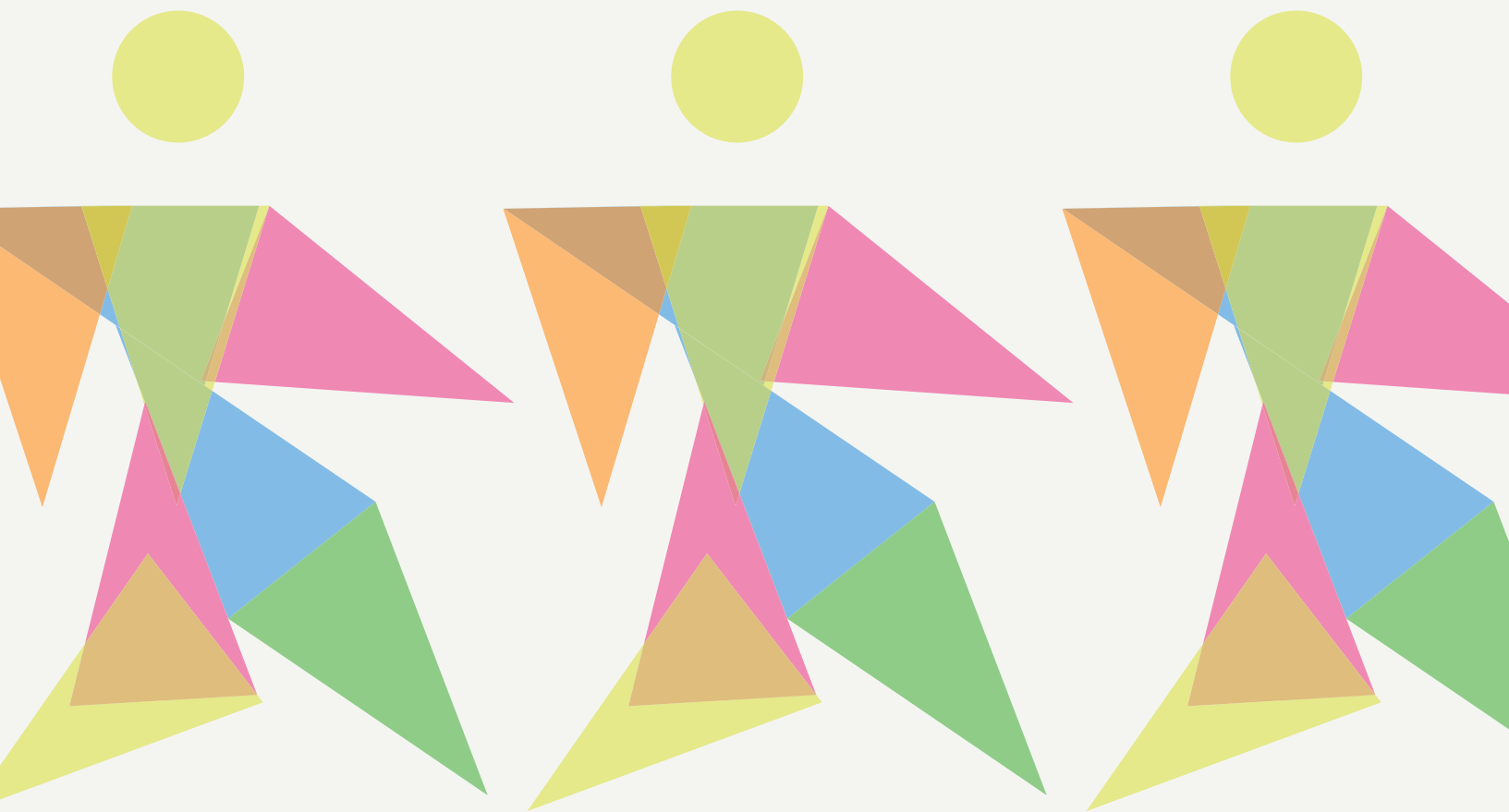


# TALENT HUB

About the Talent Hub  
(frequently asked questions)



A partnership project by:

YORKSHIRE  
DANCE

T!NARTS

INCLUSION  
NORTH



## **Do I need to have done lots of dance before?**

No. We are looking for potential and new talent. However, being a member of the Talent Hub will require commitment and hard work, so you do need to be sure that being a dancer is what you would like to do and that you are prepared to put the time and energy in.

## **Do I need a diagnosis?**

You do not need a diagnosis, but we will need to be sure that you are suited to our programme. We may ask you for more information about your learning disability or autism and talk to people who know you and can help us understand your disability.

## **What if I have other disabilities?**

As long as you have a learning disability, autism or both the Talent Hub is open to everyone regardless of any other disabilities you may have. This includes visual or hearing impairments or wheelchair users.



## **Can I bring a carer or support worker along with me?**

We will work with your carer/support worker very closely. They will be involved in your time with the Talent Hub. We would like to prepare you and challenge you to do some of the Talent Hub independently. If you need support for medical reasons, please contact us to talk about it.

## **What if I'm only 17 but really want to do it?**

As long as you are 18 by 1st July 2018, you can still apply.

## **What if I don't live in the North East of England or Yorkshire?**

All Talent Hub activities will take place in the North East and Yorkshire but if you think you could commit to working with us and live outside of these areas and you think the Talent Hub is right for you, please get in touch with us.



## Will I need to change where I live?

No. We will support you to dance and train in the area you live but you will also be invited to come and dance with the other Talent Hub members at a 'residency' when we all stay together in one place for a week.

## How do I get to the residencies?

You will need to travel. This might be something you have never done before. Don't worry - the Talent Hub will support you to become more confident doing this.

## What if I join but don't enjoy it?

Everybody we think might be good enough to join the Talent Hub will join us as a possible member to start with. They will take part in a series of activities and we will talk more about what being part of the Talent Hub is all about. We will then decide together whether the Talent Hub is the right option for each dancer - if you aren't enjoying it, you will probably know by this stage.

# TALENT HUB

 [yorkshiredance.com/talent-hub](https://yorkshiredance.com/talent-hub)

 0191 384 0728

 [talenthub@tinarts.co.uk](mailto:talenthub@tinarts.co.uk)

**If you have any other questions please ask us!**

A partnership project by:

**T!NARTS**

**YORKSHIRE  
DANCE**

INCLUSION  